



JFAN Connector 12th December 2025

Principal's message

Dear Parents and Carers,

Thank you to everyone who attended our Parent Partners meeting last evening. It was a very positive and productive session, with lots of fantastic ideas shared. One key piece of feedback was about the JFAN Connector. It has come to light that some parents may not be accessing the *interactive version*. Please see the attached guidance on how to access this communication easily, without having to scroll through a long PDF document. We hope this helps! One of the highlights of this week was our Christmas Dinner—a truly special occasion with 300 students enjoying a festive feast together. Looking ahead, next week promises to be full of community spirit, with events including our Carol Concert, Christmas Concert, several award celebrations, delivering food bank donations to the Church, and our charity non-uniform day. We look forward to sharing these moments as they unfold on Facebook and our school website.

Thank you for your continued support as we celebrate this wonderful time of year together. Warm regards,

Mrs D Warwick

Principal, Joyce Frankland Academy

Working in Partnership with Parents and Carers



Christmas Concert

The Performing Arts Christmas Concert is taking place on Thursday the 18th of December. We have over 60 students performing this year and the wonderful PTA will be there with a selection of Christmas goodies to purchase. Please reserve a ticket using this [link](#) or the QR code below, the event is free but we will be collecting donations on the door and via ticket source.



JOYCE FRANKLAND
ACADEMY, NEWPORT

CHRISTMAS CONCERT

18TH DECEMBER 2025
5PM

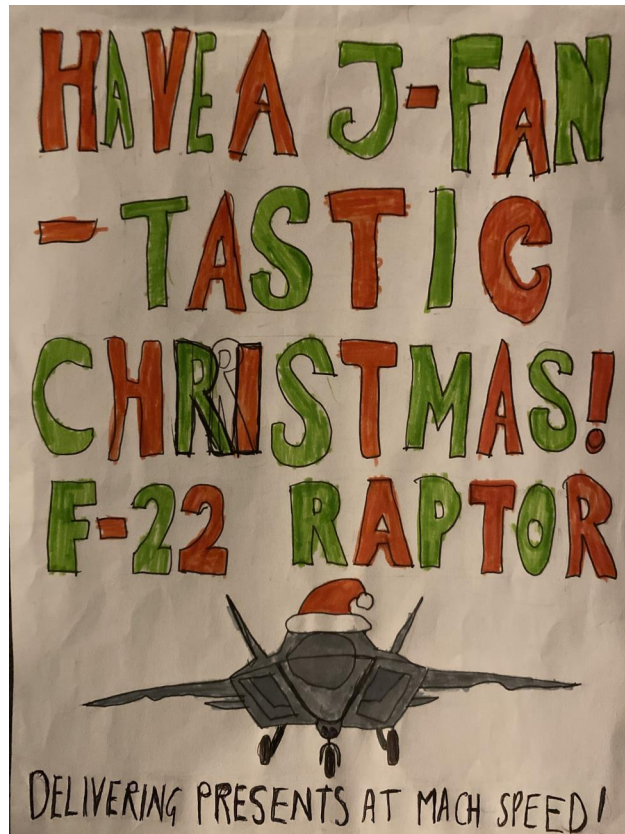
SCHOOL HALL
(PLEASE PARK IN THE TOP CAR PARK)

ENTRY IS FREE, BUT WE WILL BE COLLECTING
DONATIONS TOWARD THE PERFORMING ARTS
FACULTY

The poster has a dark blue background with numerous yellow stars of various sizes. At the top center is a large yellow five-pointed star. Below it, the text 'JOYCE FRANKLAND ACADEMY, NEWPORT' is written in white, followed by 'CHRISTMAS CONCERT' in large white letters. To the left of the center are two yellow Christmas trees. To the right is a yellow and white crest featuring a lion, a cross, and other heraldic symbols. Below the crest, the date and time '18TH DECEMBER 2025 5PM' are written in yellow. Further down, 'SCHOOL HALL' is written in white, with '(PLEASE PARK IN THE TOP CAR PARK)' in smaller white text below it. At the bottom, a line of yellow text reads 'ENTRY IS FREE, BUT WE WILL BE COLLECTING DONATIONS TOWARD THE PERFORMING ARTS FACULTY'.

Christmas Card Competition

Congratulations to everyone who entered a Christmas Card design in to the competition this year. As always the standard was really high making judging for Mrs Warwick and Miss Sharpe extremely hard. Congratulations to our winners Isaac, Isobel, Chloe, Iker, Maia, Barbara, Archie, Ruby and Lucinda who will all receive a fantastic art prize. The winning designs are shown below.



1 - Isaac S Year 7



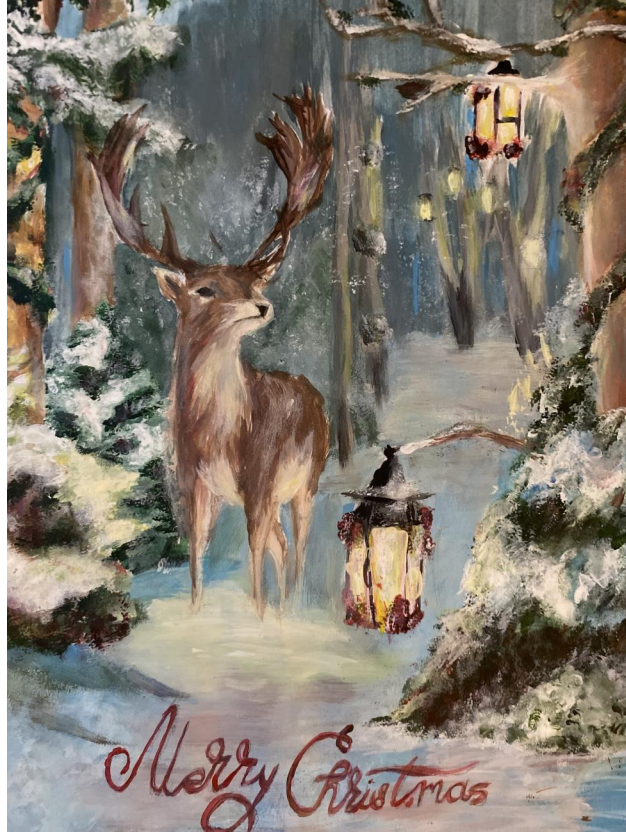
2 - Archie G Year 10



3 - Archie G Year 10



4 - Lucinda T Year 11

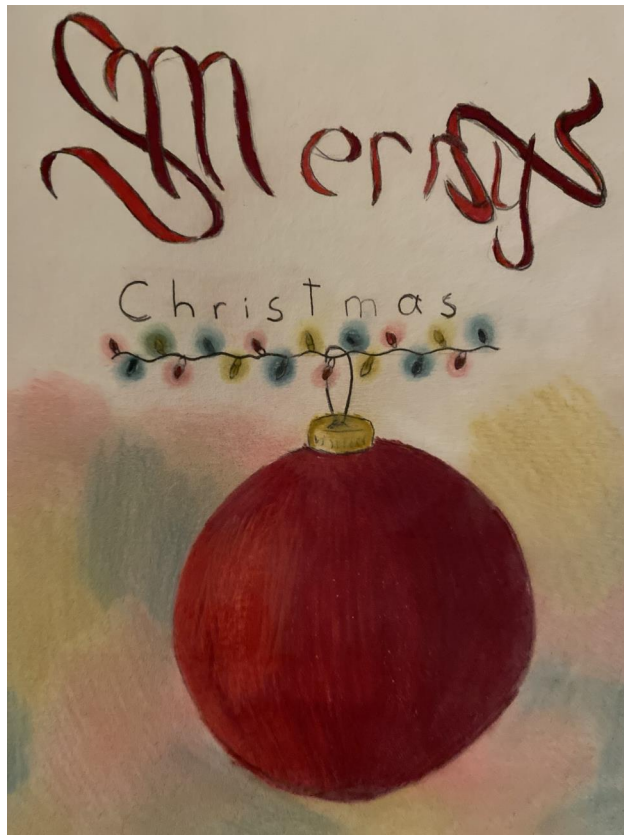


Merry Christmas

5 - Ruby P Year 10



6 - Maia B Year 9



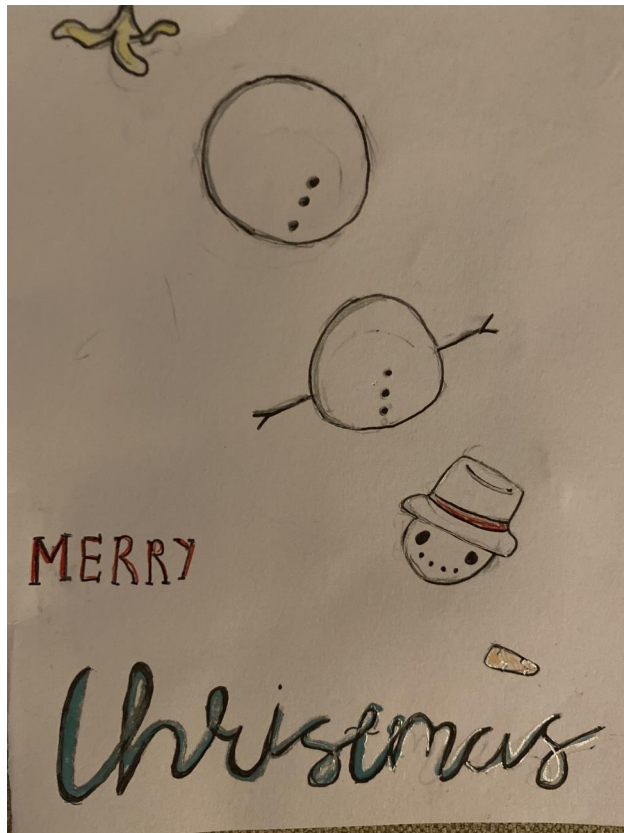
7 - Barbara Z Year 9



8 - Iker S Year 8



9 - Chloe M year 8



10 - Isobel M Year 7

Christmas dinner

A big thank you to Innovate for the fantastic Christmas dinner on Tuesday! The dining hall looked very festive, and all the students had a great time enjoying the meal with their friends.





Attendance



Attendance Update

Please find below attendance for each year group for the week commencing 15th September. As a reminder we would be expecting each year group to be over 97% each week.

Attendance week 1st to 5th December

Year 7: 96.94

Year 8: 94.31

Year 9: 90.64

Year 10: 89.09

Year 11: 93.01

"Thanks for being here—your effort counts!"

"You make our days brighter and better!"

Enrichment



At our Academy, we believe that co-curricular activities are an essential part of a well-rounded education. They offer a range of benefits that support our students in developing aspiration, showing respect, and building a strong sense of responsibility. Through participating in these activities, students are encouraged to:

- Aspire to reach their full potential by exploring new interests and talents

- Show respect by working collaboratively with peers and staff in a positive and inclusive environment
- Take responsibility for their own personal growth and learning beyond the classroom

Co-curricular involvement also helps to:

- Enhance academic performance
- Boost self-esteem and emotional well-being
- Provide meaningful social opportunities
- Develop essential life and leadership skills
- Strengthen applications for sixth form, college, or university

We are proud to offer a wide and diverse range of clubs this term, and we hope your child will take full advantage of these opportunities—to aspire confidently, act with respect, and grow with responsibility.

The full timetable is available on our website [here](#).

Careers

We are hosting our annual Careers Carousel for Years 9, 10 and 13 on 15th January. If you or your employer would like to present at the event please contact lford@joycefrankland.org for further information. The brief outline of the event is; A day where students visit talks in small groups alongside their year group peers, focusing on careers in sectors, education providers and local employers/employees. Talks are 20 minutes long with 10 minutes Q&A at the end for students to help understand the choices that lay ahead.

House Points

House points

Weekly house points

118 Banstead

106 Caius

54 Frankland

76 Morden

102 Saxie

94 Thompson

80 Trappes

Dates for the diary coming up...



Wednesday 17th December Year 7 Carol Concert

Thursday 18th December Christmas Concert 5.00 pm

Friday 19th December - Non uniform and End of Autumn Term school closes at 12.25

Monday 5th January Term starts

Thursday 8th January Year 9 Parents Evening

JFAN PTA



The Role and Importance of the PTA

State schools are currently facing considerable budget constraints due to ongoing government funding shortfalls. These financial pressures have unfortunately resulted in consequences such as staff reductions, a narrower range of subject choices, and significant cuts to extracurricular activities. While there have been some funding increases in recent years, many schools continue to experience real-terms cuts since 2010, with the most deprived areas and secondary schools being particularly affected. Against this challenging backdrop, it is important to recognise how rare it is for a high school to have a thriving Parent Teacher Association (PTA). JFAN is truly

privileged to have maintained an active PTA for over a decade, benefiting students, staff, and the wider school community, raising between £5-10K per year.

Join the PTA: Volunteer Opportunities

In order to continue this vital work, we need to recruit new members. We are keen to welcome enthusiastic parents and carers to join our expanding team, with opportunities available in the following areas:

- PTA Secretary (job share)

There are also opportunities to take on one-off projects, including:

- Winter Ball 2026 – for parents, carers, and the teaching community (with much of the groundwork already completed)
- Uniform pop-up shops – at JFAN and the Farmers Market (held monthly)
- Fundraiser Golf Day – Spring 2026
- Christmas Market 2026 (Young Enterprise) – December 2026
- Year 7 School Disco

You can also lend a helping hand at our regular events, such as school BBQs, Quiz Nights, and serving refreshments at the annual Drama production.

Save the Dates

A full calendar of PTA events will be shared in due course.

Contact Information

If you have any questions or require additional information, please contact Kerinda or Kaymarie via the school email: jfaadmin@joycefrankland.org

Lost Property

If your child/ren have lost any property, items of uniform or equipment please check the photographs to see if you recognise anything. Items will be stored in student reception ready for collection.









Safeguarding Team



Role:

Designated Safeguarding Lead (DSL)

Deputy DSL(s)


Name and contact details:

Lee Gamble lgamble@joycefrankland.org

Dan Langley dlangley@joycefrankland.org


Emma Brockwell ebrockwell@joycefrankland.org

Named safeguarding governor	Margaret Sherwin
Chair of Governors	Nigel Poad
Trust Safeguarding Lead	Camilla Saunders
School Online Safety Lead	Lee Gamble
School Prevent Lead	Dan Langley
Designated teacher for Children in Care and children previously in care (CiC)	Lee Gamble
Senior Mental Health Lead	Emma Brockwell and Dan Langley


JFA Whisper Report
Anonymous Reporting Form
Joyce Frankland Academy, Newport

PROBLEM? Whisper

If you have a problem or concern in school or at home, you can report it to a member of staff anonymously.





When To Report...

- You or a friend are being bullied
- You are concerned for a student's welfare
- A student, member of staff, or parent has behaved inappropriately
- You need to talk to someone about a problem
- Suggestion for changes or improvements in school

Report via SMS or visit:

<https://swgfl.org.uk/whisper/jfa21/>


 Powered by Whisper
 
 SWGfL
Safe, Secure, Online

11 - Whisper

Whisper is our online reporting tool which supports our existing safeguarding practices and allows us to take effective action quickly. Students can report concerns for welfare, bullying or if they just need someone to talk to about a problem in school or at home and can be made anonymously if they wish.

The link is here [Whisper](https://swgfl.org.uk/whisper/jfa21/)

Donations

Can you help?

At times we are developing areas of the academy or are working on small projects that would benefit from particular items but can't always afford these from our schools budget. When these items are identified we will be putting in small notice in the JFAN Connector just in case any of our families may be getting rid of these items from home or would like to donate. Thank you for your consideration.

Reading Books - please keep donating any books that are suitable for our students and are in good condition; we can never have too many books! We would really like some more Guinness book of Records books.

IKEA Cube Storage Units (Kallax - the ones with the square sections you can put boxes in, any size or colour) - we are developing a few areas at the academy where these would be really useful.

Vacancies



Details for all the current Academy and Anglian Learning vacancies can be found on our website [here](#)

Contact Us



Joyce Frankland Academy

Bury Water Lane

Newport

Essex

CB11 3TR

Tel: 01799 540237

Email: jfaadmin@joycefrankland.org

Visit us on our website at www.joycefrankland.org

Please follow our social media pages. [Facebook](#), [JFAN Performing Arts](#) and our [Linkedin](#) page.